
DrewsNews

The newsletter of Drews Park Village Association spring 2014



**First apple crop from the newly acquired orchard at Drews
Park**

More news and photos on pages 6-7

DEAR RESIDENTS OF DREWS PARK



Well, here we are on the verge of spring with snowdrops and daffodils making an appearance, although with all the recent storms and rainfall it has sometimes seemed a bit far off. However it does make you appreciate being on high ground whilst having a great deal of sympathy for those adversely affected in one way or another.

There has recently been some filming carried out in Drews Park for a new programme to be called *Secrets of the Asylum*. You can read all about it on pages 4 and 5.

Please also note the accompanying information about the removal of refuse, especially about disposing of TVs, furniture, mattresses etc privately, to avoid other residents having to pay for your rubbish being taken away.

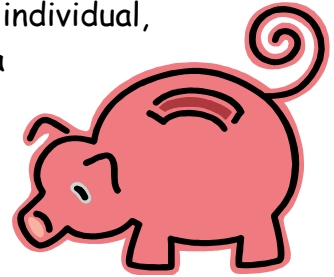
Picking up on a few other things which we have been regularly following up with Aster Communities since our last newsletter and AGM in the autumn, the remedial external painting work was completed last November as promised just in time for protection against all this rain, as was the drainage repair in Cooke Court. We are continuing to press them on the programme for maintenance of the TV system, road signs and lamp standards, stone walls, paths and improvements to the bin stores now that the bad weather is easing a bit. The contract for the lawn maintenance for next year has also been placed.

Please contact me or any of the DPVA committee members if you have any concerns or would like to know more about any topic, or indeed possibly joining us. We are there for the benefit of all residents but as a voluntary body we are totally dependent on active contributions by residents.

Best regards
Peter Benns
Chair DPVA

SERVICE CHARGES

Nobody likes paying services charges but when you are a leaseholder, even with a 999 year lease, they are inevitable. A Grade II Listed building like ours is subject to strict planning obligations which, if left to the individual, might not be maintained. A large converted building with a continuous roof, for example, could allow all sorts of disputes to arise, so it's better that the work is done by the managing agent as part of their maintenance plan. The committee was rather surprised to learn, after 14 years of management, that Aster now intends to charge an administration charge of 10% on tenders that have to be sought under section 20 Consultation procedures. To be fair, most managing agents do this but Aster had not until now.



We have discussed this with them and while 10% might be fair for smaller contracts, such as gardening and grass-cutting, we felt that to take another 10% plus VAT on top of, say, a £140,000 contract for repainting would be excessive. After discussion we believe there is some leeway for negotiation on larger contracts. Be assured the Association will fight to get a fair and equitable charge, especially on high cost tenders.

IT TIPS



How to find things fast on your iPad or iPad mini. Swipe the device's home screen downwards and you bring up Spotlight Search. Then start typing and the results start to appear, whether you're searching for an App, a bookmark or even a contact.

THE SECRET LIFE OF THE ASYLUM

FILMING AT DREWS PARK

Last month a film crew came to Drews Park to film a sequence for their follow-up series to *Secret Life of the Workhouse*, shown on ITV and still available on YouTube. The Company who make this series is Wall to Wall, who also made '*Who do you think you are?*', shown on BBC over the last few years.

This new series, to be aired on ITV later in the year, follows the lives of well known people who have discovered that an ancestor was, at some time in their lives, an inmate of an asylum, as psychiatric hospitals were known in the 1800s.

Prior to the filming the producers contacted committee members, having seen information on both the Drews Park website and The Mews site and we were able to provide original floor plans, a timeline of the history of Roundway Hospital (as it was then) and put them in touch with people who worked here over time going back sixty years.



Exterior filming at Drews Park

Park

Interiors were filmed in the central house in Wyatt Court, being the main historical entrance and the only house with some remnants of

Cont'd

Cont'd

the original hall and staircase. The identity of the subject connected with Roundway Hospital is confidential until nearer the airing date.

Day two of shooting was the Wednesday of the terrible gales and rain but luckily when the exterior shots were started of the arrival of the 'subject' of the programme at Drews Park, the rain had eased a bit. His/her first comment was that it was so much nicer than he/she had imagined. It's true that the old hospital was not quite as welcoming as it is now but the lovely warm Bath Stone facade always gave it a pleasant feel.

My house was used as the 'dressing' room and rest area for the crew and some of the participants. The expert on mental hospital history, who had braved the London underground strike to get here, was 'miked up' and after a snack and a cup of tea was led off to do his part in the proceedings.

Later the series producer, researcher and other crew members came in and poured over the research material. After the arrival scenes were 'in the can', the director and the historian went over the research papers in great detail, the interesting factor being that the 'subject' did not know what had happened to the ancestor/inmate of Roundway back in 1910 and beyond. That would come as a surprise during the actual shooting of the scene.

Watch this space ... More soon!

lisa@drewspark.co.uk

RESTAURANT CORNER



An excellent place to eat specializing in fish delivered daily from Cornwall. A varied menu with

A la carte or set menu. It has 2AA rosettes and an Egon Ronay star. Good wines, too! Drews Park residents have eaten there several times over the years and fully recommend it. Lunch and dinner served every day except

Sunday when it is open solely at lunchtime. General enquiries and bookings 01380 723053

The George and Dragon at Rowde

IT WAS RAINING APPLES...

...last October on apple picking weekend!



Last summer the orchard, along with the cricket field were bought by the Wiltshire Wild Life Trust with donations from businesses in Devizes and a large number of local people. For the first time in fifteen years the apple harvest took place and quite a few Drews Park residents turned out to help Stuart Hislop, who manages the orchard, and Lorna his partner, to collect the fruit.

On the second day it was pouring with rain as well as apples but they pressed on and by the end of the

day several huge sacks were ready to take to the winery at Littleton Panel called Beckett's Vineyard. There they were pressed and pasteurized and a proportion of the product returned to the Wildlife Trust to sell, thereby assisting in the funding of the work that will inevitable be needed on an orchard so neglected for so many years.

In November the first steering group had a meeting to decide on the way forward. Drews Park Village Association was asked to nominate a member to sit on the Steering Group and a Management Board will be set up in the New Year to plan the future of the Orchard and the cricket field and to manage its future.



Stuart has a willing band of helpers in the woods but can always do with more help. If you have any time to spare, either regularly or just occasionally you would be very welcome to join in.

Even if it is only at apple-harvest time

You can email Stuart at

stulornaeve@yahoo.co.uk and he will let you know what's going on. By the way, fallen apples can be picked up but fruit should not be taken from the trees.

DREWS PARK WEBSITE - A REMINDER

If you haven't lived at Drews Park for long you may not know there is a website devoted to our home. It includes various sections including a list of committee members, our constitution, events including the Palace Cinema and the Wharf Theatre. After many years of arranging our theatre visits Mary Stevens stepped down recently and so far we don't have anyone willing to take on that work! But we still list the productions and people still enjoy the Wharf's many enjoyable plays and musicals. If you are interested to know what is happening, you can read Minutes of the meetings between the Drews Park Village Association (your residents' representatives) and Aster.

If you have any questions on these matters don't hesitate to phone or email our Chair, Peter Benns, or any of the committee. Numbers and email addresses on back page.



Should you feel you would like to be part of the committee we take nominations at the annual AGM usually held in October. An application slip is included in the September issue of Drews News. It is always useful to have new members, with fresh ideas on how we can improve our environment and community.

Long term residents will know that our webmaster, Dr Ralph Meyer, owned a house in Thurnham Court for some years before going back to Australia. He must be one of the most distant webmasters you can find, but that's the magic of modern communications. If you have anything to add to the website you can reach him at webmaster@drewspark.co.uk and the website is www.drewspark.co.uk

* * * * *

CONTACT DETAILS FOR ASTER

Hannah Enderby(1st point of contact)

Mon-Wed midday. hannah.enderby@astercommunities.co.uk

Leanna Weller (also 1st point of contact)

Wed-midday to 4.30pm Friday

Direct dial - 01380 735578

Overseen by Alex Akhigbemen. Phone 01749 832009

Mobile 07738 192722 alex.akhigbemen@astercommunities.co.uk

BOOK CLUB NEWS

As we now have a large number of active members please telephone Norma on 724950 to check availability if you would like to join us. If not perhaps you will enjoy some of the books we are reading.

March	<i>The Fishing Fleet</i> by Anne de Courcey
April	<i>Dominion</i> by C J Sansom
May	<i>The Year of the Hare</i> by Arto Paasilinna
June	<i>The Nebuly Coat</i> by John Meade Falkner
July	<i>The Daughter of Time</i> by Josephine Tey
August	<i>Bel Canto</i> by Ann Patchett
September	<i>A Hero of Our Time</i> by Lermontov
October	<i>A Legacy</i> by Sybille Bedford
November	<i>The Sense of an Ending</i> by Julian Barnes

Christmas Decorations!



Enormous snowman right next to the Gendarmerie in the village of La Gaude in the Alpes Maritimes seen during a stay there at Christmas!

Editor

ONE OF DPVA'S NEWER MEMBERS...

...Mathew Bevan has an interesting CV!

Described in the US Senate as "possibly the single biggest threat to world peace since Adolf Hitler," I am the original *Geek's Geek* (and not at all threatening).



I have filled up much of the last 14 years creating viral marketing campaigns for an exciting range of clients, including Nintendo, Orange, Sony, Motorola, Evian and Sky. In between, I have offered technical expertise to a diverse range of grateful customers, from Greenpeace to the Envoy to His Holiness the Dalai Lama.

I moved to Drews Park in 2001 with my wife, who died of meningitis just a few months later. I am happy to report that I found love again, remarried and have a young son, Arlo.

During this time I trained as a clinical hypnotherapist and have helped hundreds of people to heal themselves and face the future with renewed vigour and optimism.

Having mastered the dark arts of IT and turning the brain inside out, I have gone back to my roots and work with the Drews Pond Wood Project, coppicing, dead hedging, cleaving, path laying and tree planting.

With a vivid outlook on technology, psychology and ecology, my holistic approach to work has earned me a reputation as a can-do man and I have lectured worldwide on various subjects.

mathew@drewspark.co.uk

NOTICE BOARD

Each Court should have a representative. We are still looking for someone to look after 23-41 Thurnham.. It's not particularly onerous; just look out for new residents and put a Welcome

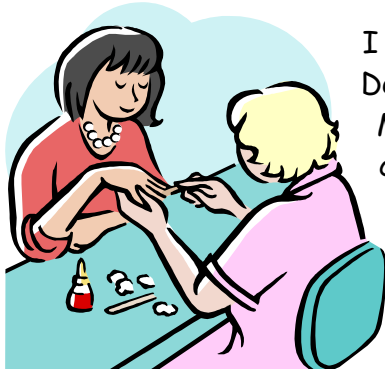
Pack through their door. Phone any committee member to sign on!

(May also lead to 10% contents insurance reduction)

Adrian Wood is our Neighbourhood Watch coordinator

<u>COURT</u>	<u>NO</u>	<u>REPRESENTATIVE</u>	<u>PHONE</u>
Bowes	18	Peter Benns	739419
Burnham	6	Sue Chick	724774
Chapel	4	Kate Rodie	739704
Clock Tower	12	Adrian Wood	738424
Cooke	4	Mathew Bevan	08456219463
Elliot	11	Edward Lockwood	730709
Speer	3	Simon Evans	
Thurnham (1-22)	17	Dick Powney	739153
Thurnham (23-41)		<i>Representative required</i>	
Wyatt	6	Lisa Penington	739588

FUNKY NAILS AND BEAUTY - ON THE DOORSTEP!



I am a fully qualified Beauty Therapist based in Devizes, Wiltshire and treatments are done in My home or if you are in Devizes I may be able to come to you! Treatments include manicure, pedicure, gel polish, spray tans, and facials, tinting and waxing!

I am a consultant for EllaPure in the Wiltshire area. EllaPure is an amazing

company who offer products at a great price, and also have the benefit of being natural and great for your body. We believe passionately that products put on the skin should be as pure, natural and as fresh as possible. We have formulated products without using Parabens (these are synthetic preservatives widely used in the cosmetic industry). We guarantee our products are not tested on animals and we only source ingredients from sustainable resources.

Phone: [07866551770](tel:07866551770)

Email: clairehams26@gmail.com

Claire Hams <http://funktynailsandbeauty.simdif.com>



Theatre News

Spring 2014 at the Wharf

March - A Pack of Lies by Hugh Whitmore.
Directed by Kim Wright Performance dates Friday
14th to Saturday 22nd March

May - The 39 Steps adapted by Patrick Barlow
from the novel by John Buchan and the movie by

Alfred Hitchcock, from an original concept by Simon Corble and Nobby Dimon. Directed
by Paul Snook. Performance dates Fri 2nd to Sat 10th May.

Sauce for the Goose by Georges Feydeau, translated by Peter Meyer. An external
production performed by **Bristol Old Vic Theatre School**. Performance dates
Wednesday 14th & Thursday 15th May

June - A Woman Alone and Other Plays by Franca Rame and Dario Fo. Directed by
Lou Cox. Please note this production features adult themes. Performance dates
Wednesday 11th to Saturday 14th June

July - Shake, Ripple & Roll - A Rock 'n' Roll Musical Book & lyrics by Jennifer
Toksvig, music by David Perkins. A Wharf Youth Theatre production directed by Kim
Pearce. Performance dates Wednesday 23rd to Saturday 26th July with matinee on
Saturday 26th

Members Contact details

Peter Bennis	Chair	18 Bowes Court
739419	peter@drewspark.co.uk	
Simon Evans	Vice-Chair	3 Speer Court
730615	simon@drewspark.co.uk	
Adrian Wood	Treasurer.	12 Clock Tower
01308 897087	adrian@drewspark.co.uk	
Lisa Penington	Secretary	6 Wyatt Court
739588	lisa@drewspark.co.uk	
Christine Fitzmaurice	Member	14 Wyatt Court
726448	caf2009@hotmail.co.uk	
Mathew Bevan	Member	4 Cooke Court
727370	mathew@drewspark.co.uk	
Simon Roberts	Member	11 Wyatt Court
727367	roberts@drewspark.co.uk	
Dick Powney	Member	17 Thurnham Court
739153	rpowney967@btinternet.com	

Co-opted members

Ralph Meyer Webmaster@drewspark.co.uk